

Allied Health 2021

Quarterly webinar

Martin Chadwick
Chief Allied Health Professions Officer
Ministry of Health

Thank you

Have a question or
comment?

Please write into the
chat

A blue thought bubble icon with a small circle below it.

Today's webinar

- COVID-19 Public Health Response (Protection Framework) Order
 - what does this mean for Allied Health services
- FAQs

Have a question or
comment?

Please write into the
chat

Key clauses and definitions on the CPF Order 2021 – related to Allied Health Services

Version as at 4 December 2021



COVID-19 Public Health Response (Protection Framework) Order 2021

(SL 2021/386)

Note

The Parliamentary Counsel Office has made editorial and format changes to this version using the powers under [subpart 2](#) of Part 3 of the Legislation Act 2019.

Note 4 at the end of this version provides a list of the amendments included in it.
This order is administered by the Ministry of Health.

This order is made by the Minister for COVID-19 Response under [sections 11 and 15](#) of the [COVID-19 Public Health Response Act 2020](#) in accordance with [section 9](#) of that Act.

Have a question or
comment?

Please write into the
chat

Do you provide health services?

Clause (hyperlinked)	
(5) <u>Interpretation</u>	health service means— (a) a health service within the meaning of section 5(1) of the Health Practitioners Competence Assurance Act 2003; and (b) treatment or social rehabilitation provided under the Accident Compensation Act 2001 ; and (c) disability support services within the meaning of section 6(1) of the New Zealand Public Health and Disability Act 2000

- **Health Practitioners Competence Assurance Act 2003**

Section 5(1) - health service –

means a service provided for the purpose of assessing, improving, protecting, or managing the physical or mental health of individuals or groups of individuals

- **Treatment or social rehabilitation provided under the Accident Compensation Act 2001**
rehabilitation—

(a) means a process of active change and support with the goal of restoring, to the extent provided under section 70, a claimant's health, independence, and participation; and

(b) comprises treatment, social rehabilitation, and vocational rehabilitation. Treatment includes physical rehabilitation, cognitive rehabilitation, and/or an examination for the purpose of providing a certificate including the provision of a certificate.

- **Disability Support Services, as defined in section 6 of the New Zealand Public Health and Disability Act 2000**

disability support services includes goods, services, and facilities—

(a) provided to people with disabilities for their care or support or to promote their inclusion and participation in society, and independence; or

(b) provided for purposes related or incidental to the care or support of people with disabilities or to the promotion of the inclusion and participation in society, and independence of such people

Do you provide health services at a designated premise?

Clause (hyperlinked)

**(10) Meaning of
designated
premises**

In this order, **designated premises** means—

- (f)
premises of health services that are partly or wholly funded by—
 - (i)
the Ministry of Health:
 - (ii)
Oranga Tamariki—Ministry for Children:
 - (iii)
the Ministry of Social Development:
 - (iv)
the Department of Corrections:
 - (v)
a district health board:
 - (vi)
Veterans' Affairs New Zealand:
 - (vii)
the Accident Compensation Corporation:

If you are a designated premise, *access must not be denied on vaccination grounds*

Clause (hyperlinked)

(31) Person must not be denied access to certain premises on vaccination grounds

(1)

A business or service in control of designated premises must not deny a person, other than a worker, entry to the premises on vaccination grounds.

(2)

A person in control of designated education and care premises—

(a)

must not deny entry, on vaccination grounds, to the following people if they are seeking to access education services at the premises:

(i)

a child or student enrolled at those premises; and

(ii)

a parent or caregiver of that child or student unless they are a volunteer or worker at the premises; and

(b)

must not deny entry, on vaccination grounds, to a boarder at a school hostel; but

(c)

may require people to be CVC compliant at a visitor-inclusive event that is hosted at the designated education and care premises.

If you are a designated premise *goods/services* must not be denied on vaccination grounds

Clause (hyperlinked)

(32) Person must not be denied access to goods or services from certain premises on vaccination grounds

(1)

A business or service in control of designated premises from which goods or services are provided must not deny a person, other than a worker, access to those goods or services (whether for that person or on behalf of others) on vaccination grounds.

(2)

A person in control of designated education and care premises from which goods or services are provided must not deny a person to whom [clause 31\(2\)\(a\) or \(b\)](#) applies access to those goods or services (whether for that person or on behalf of others) on vaccination grounds.

(3)

A tertiary education provider from which goods or services are provided must not deny a secondary student to whom [clause 31\(3\)](#) applies access to those goods or services on vaccination grounds.

(4)

Subclause (1) does not apply to a person in control if they are a person who resides in designated premises described in [clause 10\(h\) to \(m\)](#).

A non-designated premise (premises A) must not deny access to a designated premise

Clause (hyperlinked)

(33) Business or service in control of premises must allow people access to designated premises

(1)

A business or service in control of premises (**premises A**) that people must enter for the purpose of accessing designated premises, or goods or services from those designated premises,—

(a)

must allow them to enter premises A for that purpose; and

(b)

may require them to enter premises A through identified access ways for designated premises only; and

(c)

must not request them to produce a CVC or other evidence of being vaccinated against COVID-19, for the purpose of accessing designated premises.

(2)

This clause is subject to the [Trespass Act 1980](#).

COVID-19 Exemptions for health services (pt.1)

Clause (hyperlinked)	
103 <u>Exemption for health services</u>	<p>(1) Nothing in this order applies to the provision of health services, or to workers who provide those services, except as specified in subclause (2).</p> <p>(2) The exceptions are as follows:</p> <p>(a) the order applies to pharmacies in the manner specified in an active COVID-19 response schedule and subject to any modifications in that schedule:</p> <p>(b) <i>(see next slide)</i></p>

COVID-19 Exemptions for health services (pt.2)

Clause (hyperlinked)

103

**Exemption
for health
services**

(b)

the following COVID-19 provisions apply to any other health services in the manner specified in an active COVID-19 response schedule and subject to any modifications in that schedule:

(i)

[clause 19](#) (QR code must be displayed in workplaces):

(ii)

[clause 21](#) (workplaces must have alternative contact record systems and processes):

(iii)

[clause 22](#) (business or service must have systems and processes to ensure people entering workplace scan QR code or provide contact record):

(iv)

[clause 31](#) (person must not be denied access to certain premises on vaccination grounds):

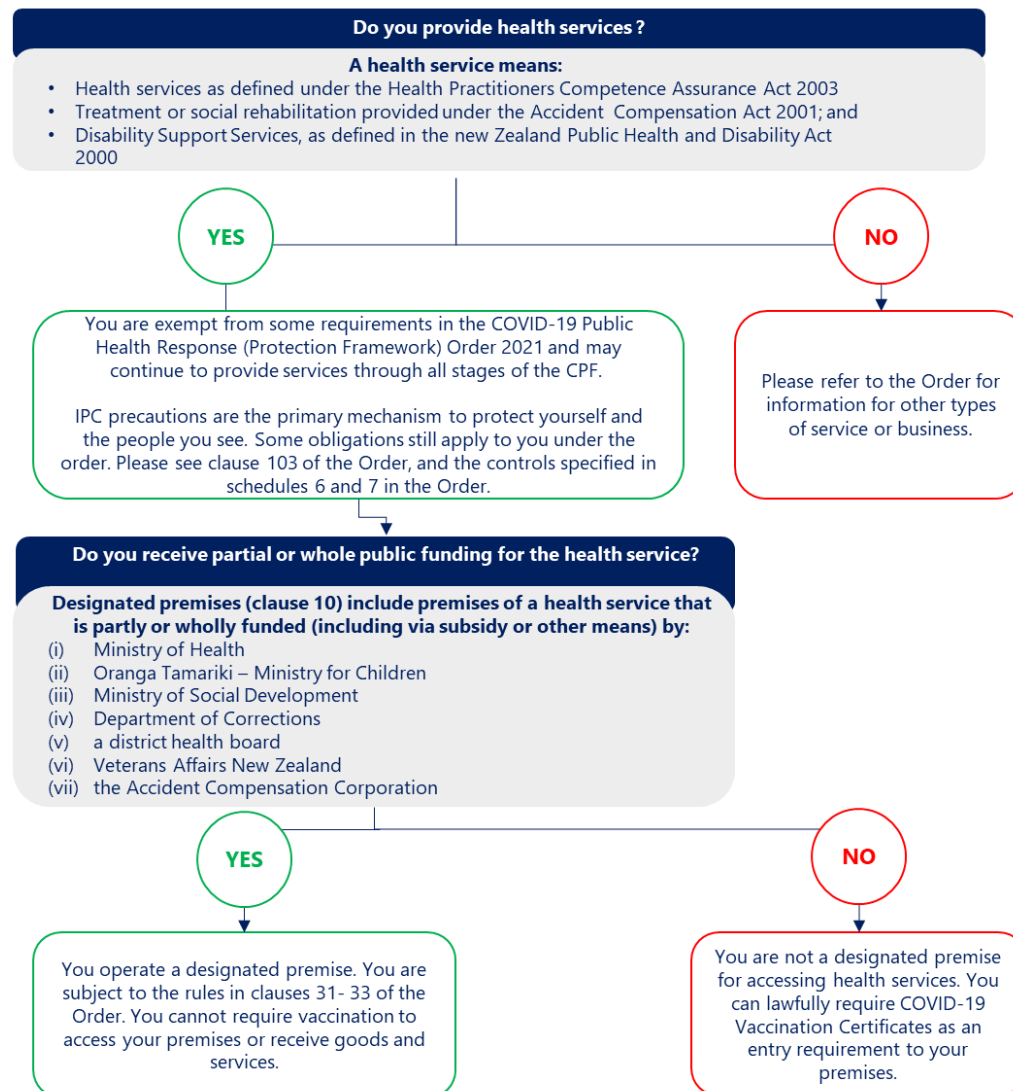
(v)

[clause 32](#) (person must not be denied access to goods or services from certain premises on vaccination grounds):

(vi)

[clause 33](#) (business or service in control of premises must allow people access to designated premises).

COVID-19 PROTECTION FRAMEWORK GUIDANCE FOR ALLIED HEALTH SERVICES



Available here:

[COVID-19
Protection
Framework
guidance for all
allied health
services \(PDF,
109 KB\)](#)

Health Practitioners Competence Assurance Act 2003

Section 5(1) - health service—

means a service provided for the purpose of assessing, improving, protecting, or managing the physical or mental health of individuals or groups of individuals

Treatment or social rehabilitation provided under the Accident Compensation Act 2001

rehabilitation—

(a) means a process of active change and support with the goal of restoring, to the extent provided under [section 70](#), a claimant's health, independence, and participation; and (b) comprises treatment, social rehabilitation, and vocational rehabilitation. Treatment includes physical rehabilitation, cognitive rehabilitation, and/or an examination for the purpose of providing a certificate including the provision of a certificate.

Disability Support Services, as defined in section 6 of the New Zealand Public Health and Disability Act 2000

disability support services includes goods, services, and facilities—

(a) provided to people with disabilities for their care or support or to promote their inclusion and participation in society, and independence; or (b) provided for purposes related or incidental to the care or support of people with disabilities or to the promotion of the inclusion and participation in society, and independence of such people

Key clauses and definitions on the Mandatory Vaccinations Order 2021 – related to Allied Health Services

2021/385



COVID-19 Public Health Response (Vaccinations) Amendment Order (No 6) 2021

This order is made by the Minister for COVID-19 Response under [sections 11 and 15\(1\)](#) of the [COVID-19 Public Health Response Act 2020](#) in accordance with [section 9](#) of that Act.

Have a question or
comment?

Please write into the
chat

Work that must be carried out by vaccinated workers

- Certain work may only be carried out by vaccinated workers. The [COVID-19 Public Health Response \(Vaccinations\) Order 2021](#) specifies who those workers are. This is a public health requirement.
 - As the order stands, there are some allied health workers who are not legally required to be vaccinated under the order.
- However, employers can also require other work to be done by a vaccinated employee, if a risk assessment identifies this is necessary for work health and safety purposes. That may be the case where the nature of the work itself raises the risk of COVID-19 infection and transmission above the risk faced outside work.
- From mid-December, there will be a new vaccination assessment tool that businesses and services can use to decide whether they can require vaccination for different types of work. Available from [Worksafe](#)

COVID-19

Frequently asked questions

Have a question or
comment?

Please write into the
chat

Risk assessment

- Clinical reasoning and risk assessment remain the fundamental principles for considering how to provide care for patients
- Clinicians will be able to see patients face to face if the following processes are in place:
 - screening for COVID-19 symptoms prior to face-to-face appointment
 - infection prevention control measures including PPE where required.
 - transmission precaution measures including consideration of ventilation
 - keep accurate documentation of appointments to aid contact tracing if required
 - ensure that your place of work is registered with the NZ COVID Tracer App and that the poster with the unique QR code is clearly displayed at the entrance to your premises.
- **Note:** The Order (clause 31-33) does not bar asking for information about vaccination in the context of clinical discussion - they merely prohibit vaccination status being used as a condition of entry/condition of receipt of service.

Treating unvaccinated patients

- The Ministry of Health has made a position statement on the management of unvaccinated individuals in healthcare settings. This statement focuses on the core issue of routine pre-consultation testing of unvaccinated patients in both community and secondary care settings [here](#)
- The rate of infection within health care settings has been very low, despite being one of the most at risk environments.
- The Ministry is of the view that in most cases, with vaccinated staff and other precautions in place, that the risks are unlikely to be high enough to provide sufficient justification to not follow the Code. In other words, denying access to health care on the basis of vaccination status is unacceptable.

Caring for yourself, your team, and other patients

- Community transmission can make COVID-19 feel relentless, disappointing, and exhausting. The most important thing you can do now is look after yourself so you can look after others. We all need a bit of support from time to time.
- **Patients who refuse to wear a mask:**
Patients who refuse to wear a mask (or have an exemption), may not be identified until they reach the premise. Again, there is a duty of care to see these patients if they are unwell.
 - If they present without a mask, they should be asked to wait outside
 - The patient can be assessed outside (subject to privacy considerations), or they need to be offered a telehealth consult
 - If face to face clinically necessary, the patient should be treated with appropriate precautions taken including:
 - separation in the waiting room, or waiting outside (e.g., in the carpark) from other patients.
 - the use of appropriate PPE by clinical staff interacting with the patient.

Physical Distancing at your premises

- People are not required to maintain physical distance from others in the traffic light system.
- But physical distancing is still worthwhile between people that do not know each other.
- Try to maximise ventilation along with room and equipment cleaning protocols. Consider waiting room layout to enable physical distancing

What to do if a staff member is exposed to COVID-19

- In most instances, fully vaccinated staff can continue working safely if all requirements set out in the guidance are met, depending on the level of risk assessed.
- The advice is intended to provide an understanding of expected processes, responsibilities and the implications for clinical practice and service continuity.
- The Ministry of Health has developed guidance on what to do if a staff member is **exposed** to COVID-19: What to do when a staff member is exposed to COVID-19 guidance document
 - covers the four categories of risk: low risk, moderate risk, high risk and highest risk.
 - It explains what to do based on the risk category you select and the vaccination status of your staff member (the guidance covers staff who're not vaccinated as there may still be instances where staff are not fully vaccinated yet).

Resources

- **COVID-19 traffic light resources**

There are a wide range of posters, videos, and social media tiles available to download online. You can easily download these, including content in 28 languages, by going to the [COVID-19 Resource toolkit](#). You can also send feedback/requests for other collateral from the toolkit or by emailing COVID19Brand@dpmc.govt.nz

- **COVID-19: Advice for all health professionals**

Guidance and factsheets to support health professionals managing COVID-19

- [Advice for community allied health, scientific and technical providers](#)
- [Advice for all health professionals](#)

- **What to expect when self-isolating**

This resource is a handy one-page guide that you can print (or email) for patients who need to self-isolate at home: [Access the PDF](#).

- **Managing COVID-19 exposures in your service**

What to do if a staff member is exposed to COVID-19: [Access the PDF](#).

Allied Health Business Plan: Update

Positioning Allied Health

Connections and relationships

Listening and engagement

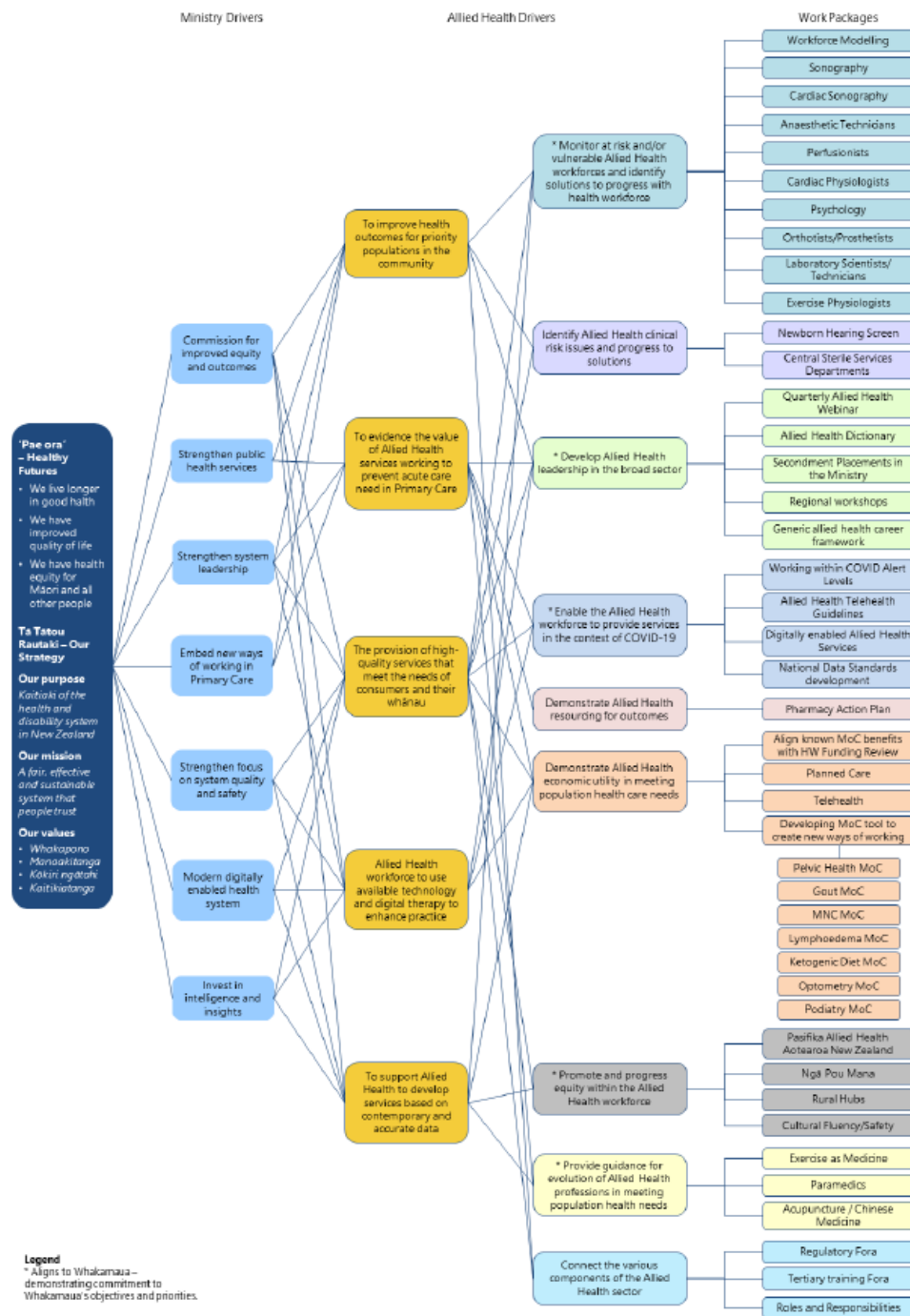
Accessibility

Direction

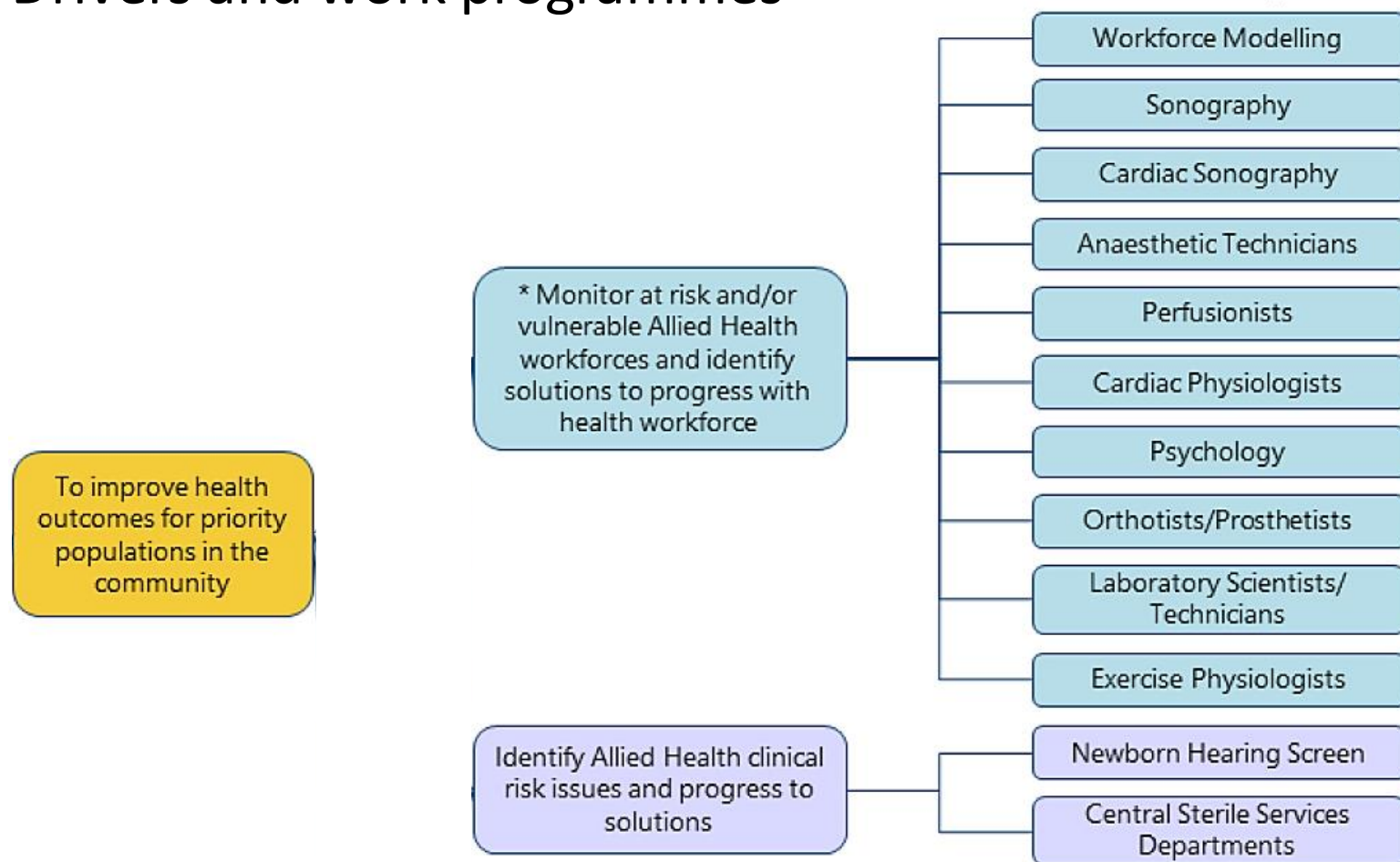
Have a question or
comment?

Please write into the
chat

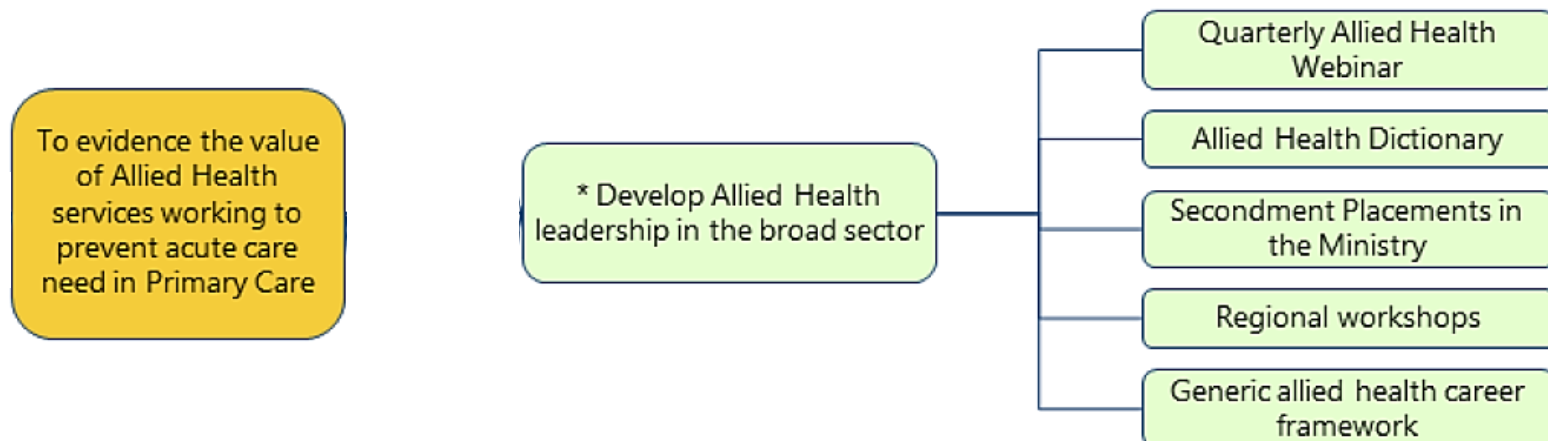
Key Drivers



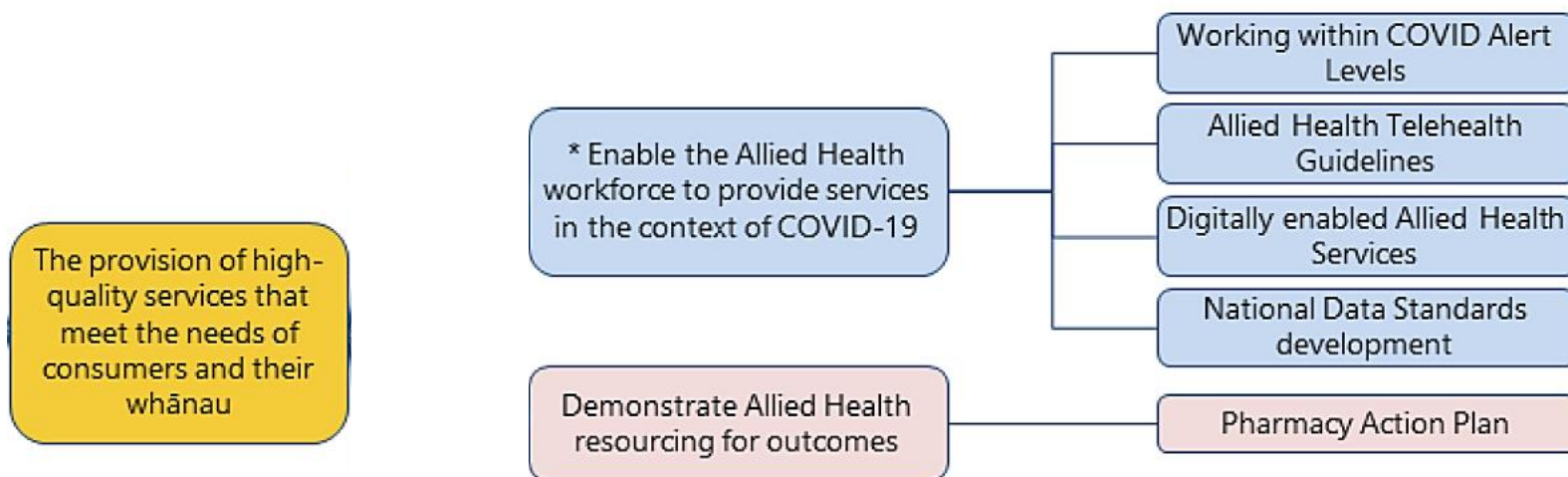
Drivers and work programmes



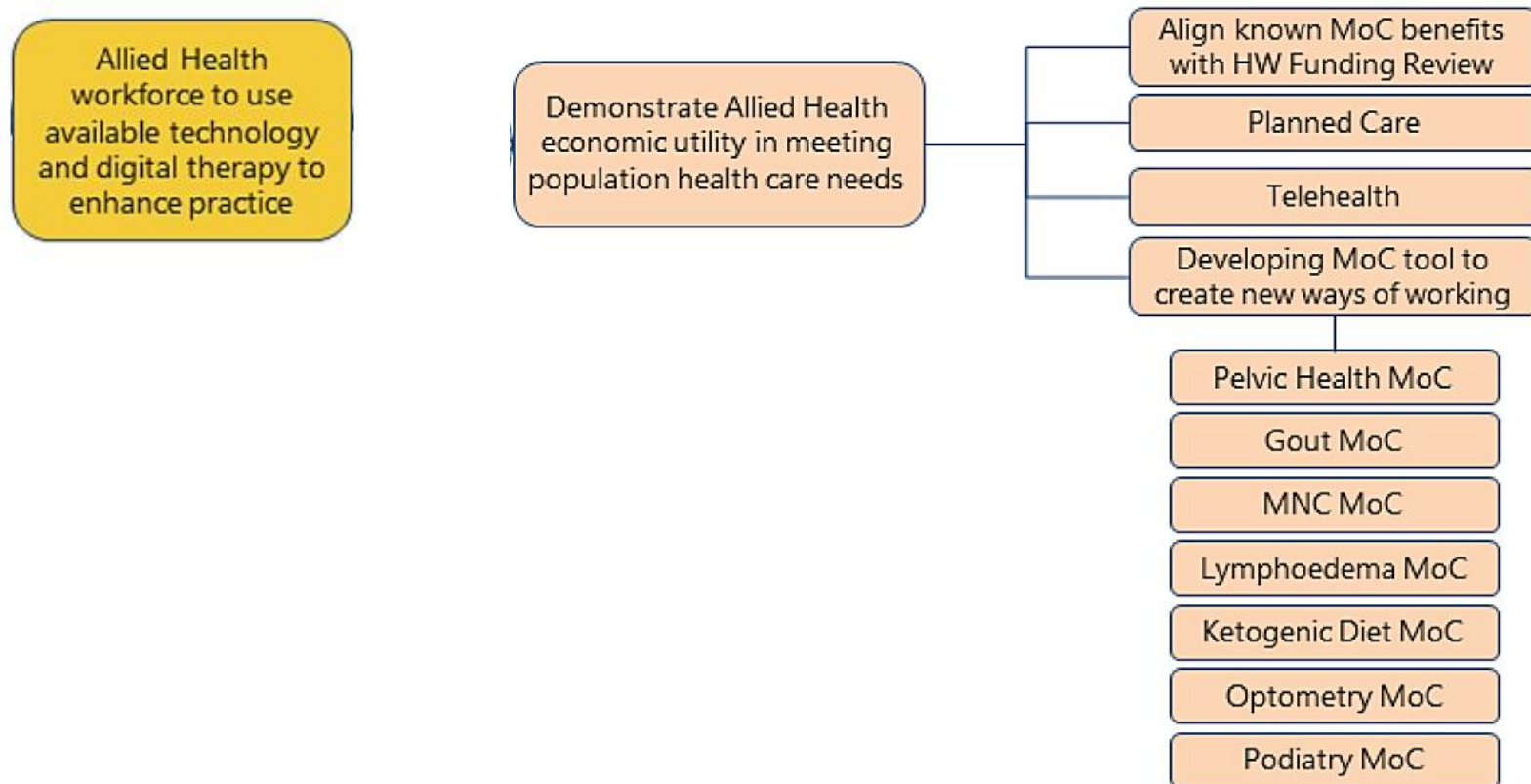
Drivers and work programmes



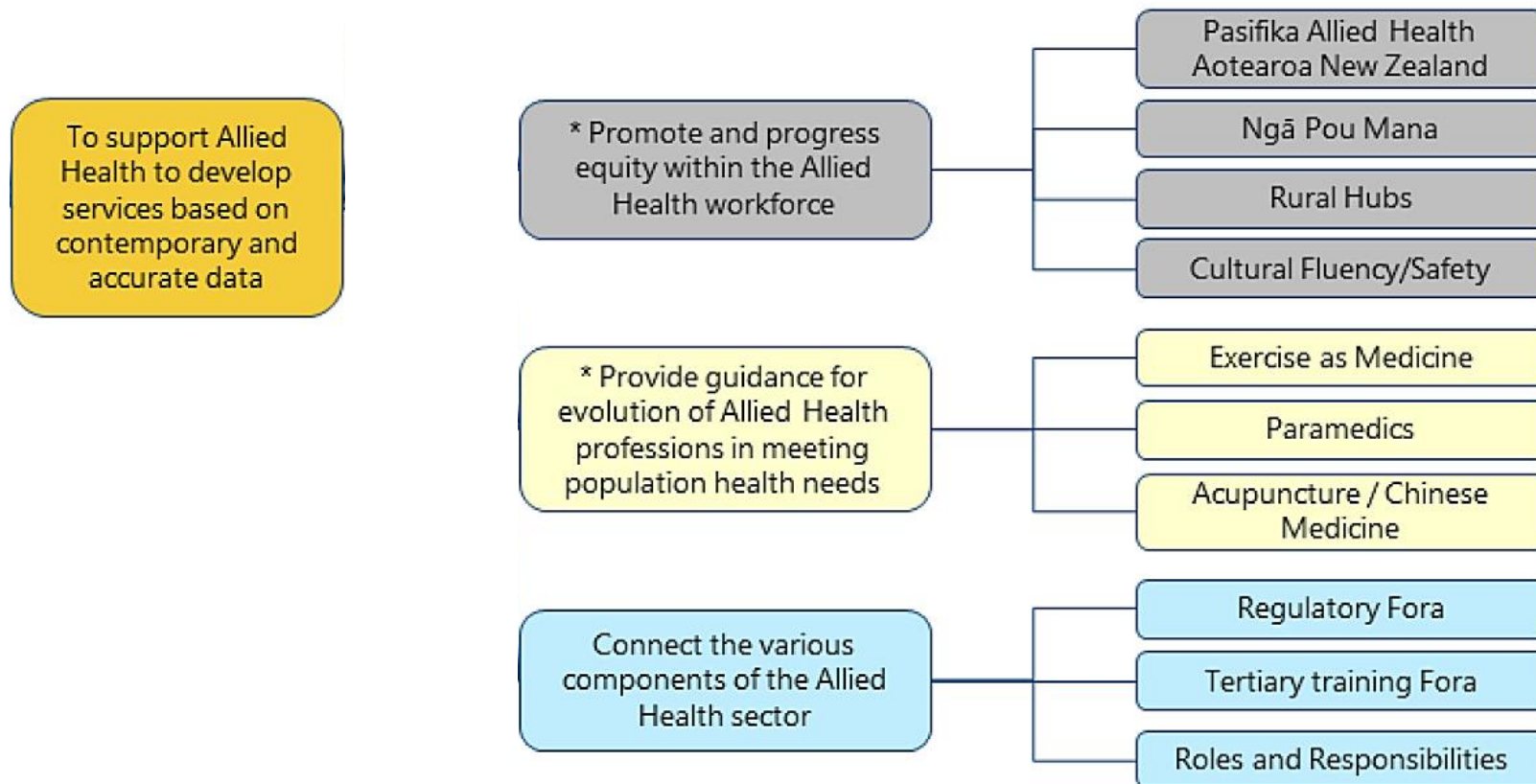
Drivers and work programmes



Drivers and work programmes



Drivers and work programmes



General Updates

What has been done or progressed in the immediate term

Have a question or
comment?

Please write into the
chat

Touch Points with TU

- Charter
- National Services
- Locality Planning

Forum for self-regulating professions

Regular Hui with RAs

Progressing work on known MOC issues

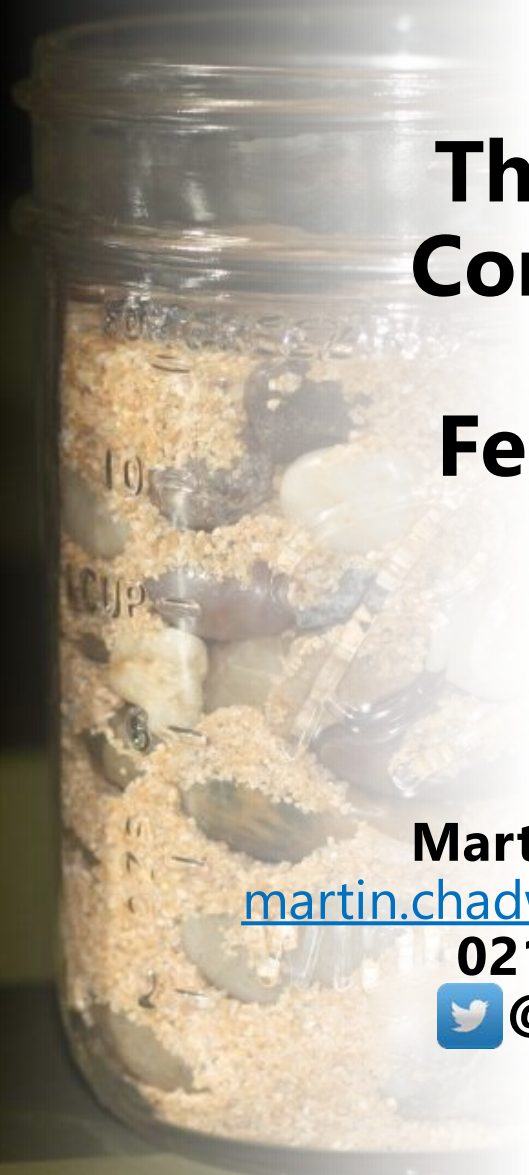
Health System Preparedness

Laboratory/Pathology Roundtable

Social Work (SWRB/ANZASW)

Focus Areas in the Intermediate Term





Thoughts Comments & Feedback

Martin Chadwick

martin.chadwick@health.govt.nz

021 220 3044

 **@CAHPONZ**